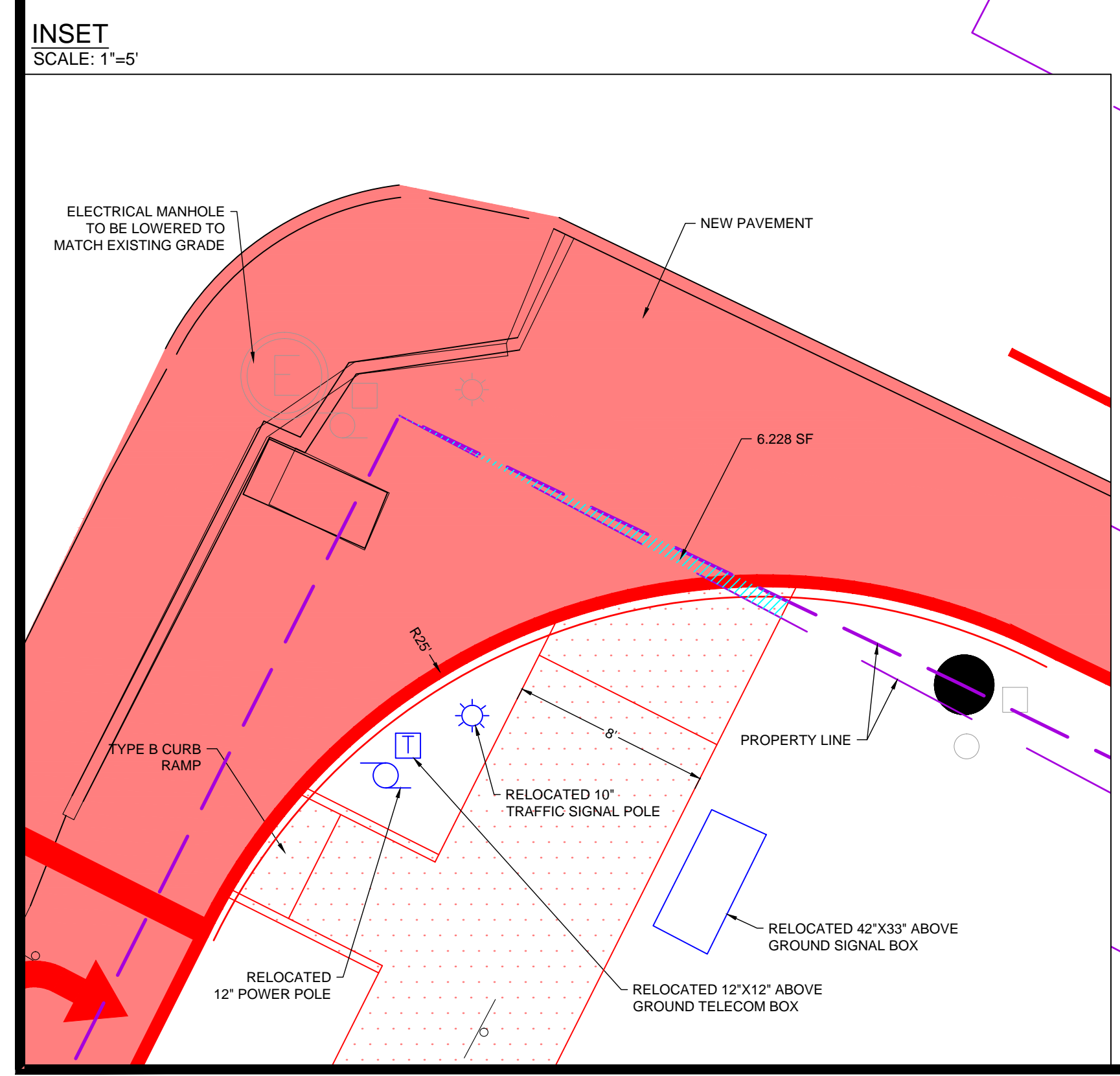
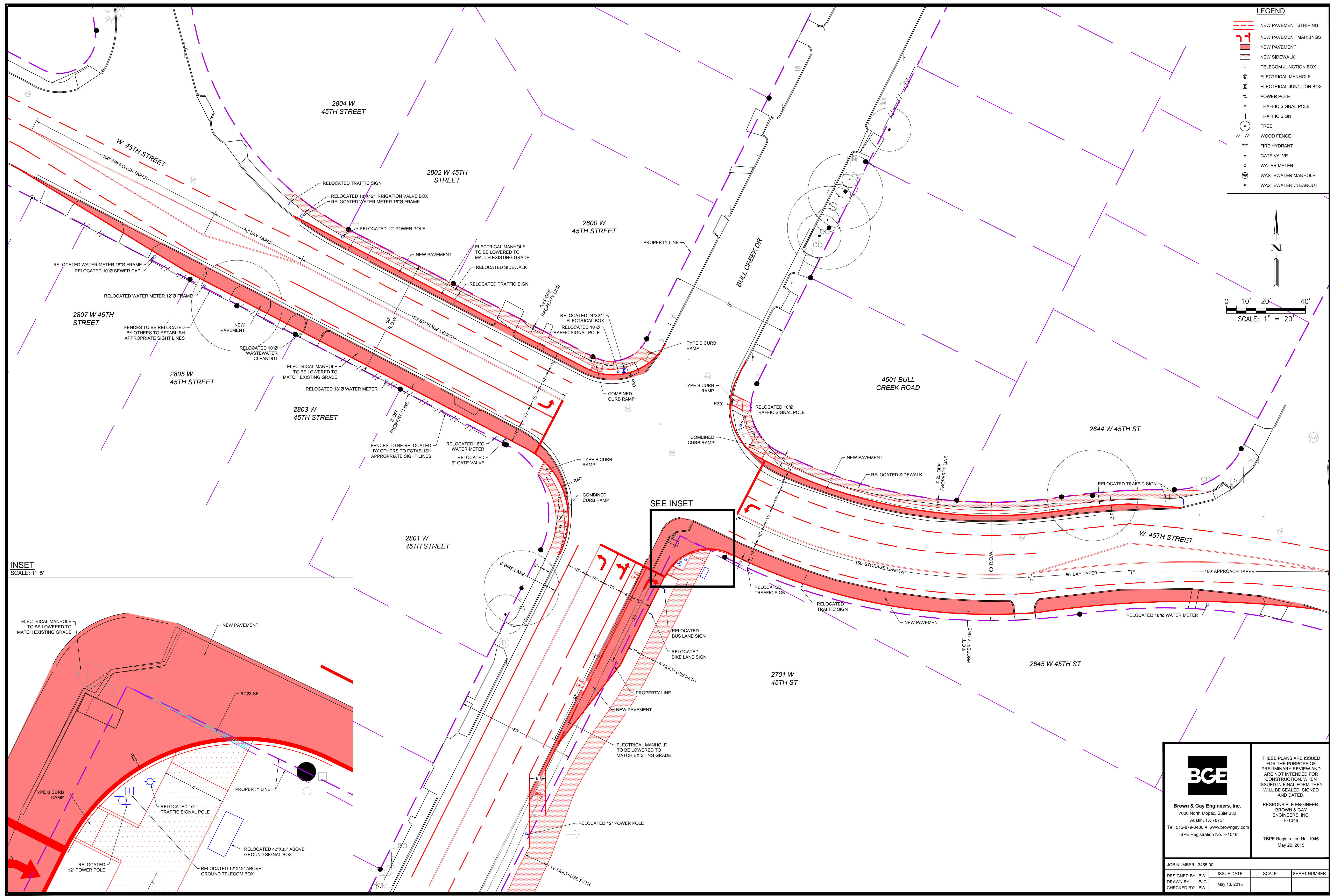
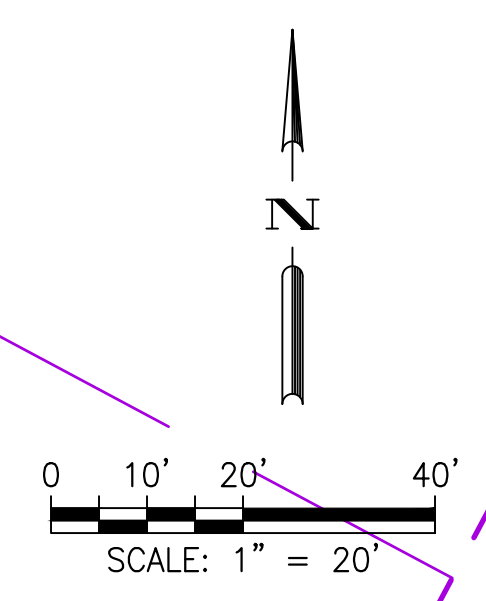


- LEGEND**
- NEW PAVEMENT STRIPING
 - NEW PAVEMENT MARKINGS
 - NEW PAVEMENT
 - NEW SIDEWALK
 - TELECOM JUNCTION BOX
 - ELECTRICAL MANHOLE
 - ELECTRICAL JUNCTION BOX
 - POWER POLE
 - TRAFFIC SIGNAL POLE
 - TRAFFIC SIGN
 - TREE
 - WOOD FENCE
 - FIRE HYDRANT
 - GATE VALVE
 - WATER METER
 - WASTEWATER MANHOLE
 - WASTEWATER CLEANOUT



BROWN & GAY ENGINEERS, INC.
 7: \\project\meters\community\Bull Creek\45th St Turn Lane\45th-00\03\020\08\45th\1655-SPR000.dwg May 20, 2015 8:47am Coates

		THESE PLANS ARE ISSUED FOR THE PURPOSE OF PRELIMINARY REVIEW AND ARE NOT INTENDED FOR CONSTRUCTION. WHEN ISSUED IN FINAL FORM THEY WILL BE SEALED, SIGNED AND DATED.	
		RESPONSIBLE ENGINEER: BROWN & GAY ENGINEERS, INC. F-1046 TBPE Registration No. 1046 May 20, 2015	
Brown & Gay Engineers, Inc. 7000 North Mopac, Suite 330 Austin, TX 78731 Tel: 512-879-0400 • www.browngay.com TBPE Registration No. F-1046		JOB NUMBER: 3455-00	
DESIGNED BY: BW DRAWN BY: BJG CHECKED BY: BW	ISSUE DATE: May 13, 2015	SCALE:	SHEET NUMBER: